

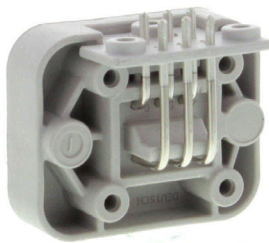


INDUSTRIAL & COMMERCIAL TRANSPORTATION

TE Connectivity offers DEUTSCH DT connectors for circuit board applications including flange and flangeless options. Pins are offered in configurations for straight or 90° bend in gold/tin or nickel/tin plating. The ruggedized DT connector interface has position options for 2, 3, 4, 6, 8, 12 and is rated at IP68, 13A and 125° C, supporting power or signal applications in harsh environment.

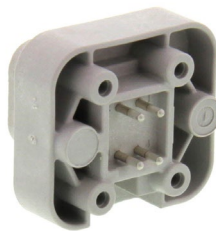
DEUTSCH DT HEADER CONNECTORS for Electronic Controller Applications

90° Pin with Flange
DT13-XXXX

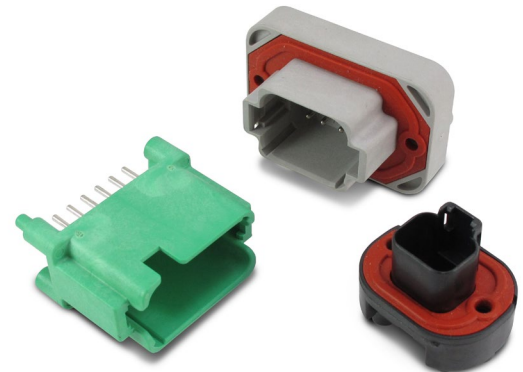


Positions
2, 4, 6, 8, 12

Straight Pin with Flange
DT15-XXXX



Positions
2, 4, 6, 8, 12

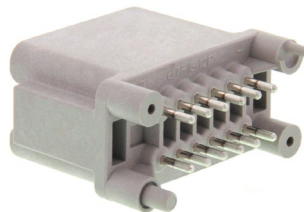


90° Pin - Flangeless
DTF13-XXXX



Positions
2, 3, 4, 6, 12

Straight Pin Flangeless
DTF15-XXXX



Positions
12

Standards and Specifications:

- Product Specifications: 108-151009
- Application Specifications: 114-151009, 114-151000

Contact us

4849 Hempstead Station Drive
Kettering, OH 45429 USA
Tel: +1 800 522 6752

www.te.com

DEUTSCH, TE, TE Connectivity, and TE Connectivity (logo) are trademarks. All other logos, products and/or company names referred to herein might be trademarks of their respective owners. The information given herein, including drawings, illustrations and schematics which are intended for illustration purposes only, is believed to be reliable. However, TE Connectivity makes no warranties as to its accuracy or completeness and disclaims any liability in connection with its use. TE Connectivity's obligations shall only be as set forth in TE Connectivity's Standard Terms and Conditions of Sale for this product and in no case will TE Connectivity be liable for any incidental, indirect or consequential damages arising out of the sale, resale, use or misuse of the product. Users of TE Connectivity products should make their own evaluation to determine the suitability of each such product for the specific application.